

# King's Cross Remodelling

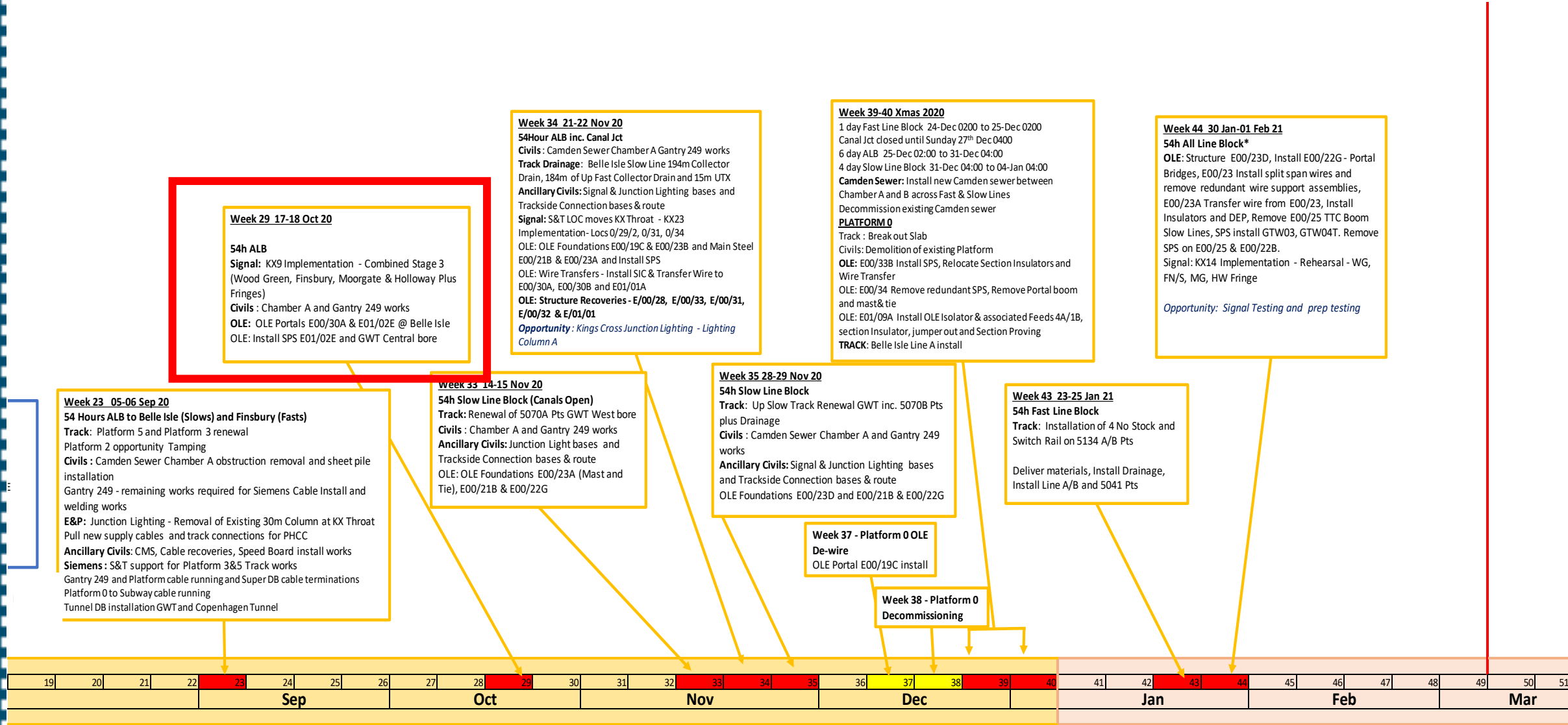
Enabling Stages – recovery plan

# KXR recovery enabling access summary

Original Plan – Dec 2020	Plan presented to July 23 <sup>rd</sup> AOB	Change vs Plan in EAS v2	Rationale
Week 12 weekend		Lost Platform Zero decommissioning	Withdrawn due to deferral of partial closure
Week 23 weekend		Lost Signal rehearsal	Descoped due to deferral
	Week 29 weekend		Replace signalling rehearsal after recovery
Week 33 weekend		Consistent – change in scope of works	Recovery of content following deferral
Week 34 weekend		Consistent – change in scope of works	Recovery of content following deferral
Week 35 weekend		Consistent – change in scope of works	Recovery of content following deferral
Week 39 and into partial closure	Week 39/Week 40	Partial closure no longer directly follows. Retains Camden Sewer renewals.	Deliver Camden sewer and recover partial closure from Week 48
	Weekend 43	Did not exist – recovers OLE activity	OLE in support of partial closure
	Weekend 44	Did not exist – recovers OLE activity & final rehearsal	OLE in support of partial closure , final Signal Rehearsal
	Partial closure	Starts in February vice December	New Partial closure date based on recovery plan

# KXR recovery enabling access

## • Overall Access



- Weekend 23

**Week 23 05-06 Sep 20**

### 54 Hours ALB to Belle Isle (Slows) and Finsbury (Fasts)

**Track:** Platform 5 and Platform 3 (shortfall) renewal

**Civils :** Camden Sewer Chamber A and Gantry 249 works

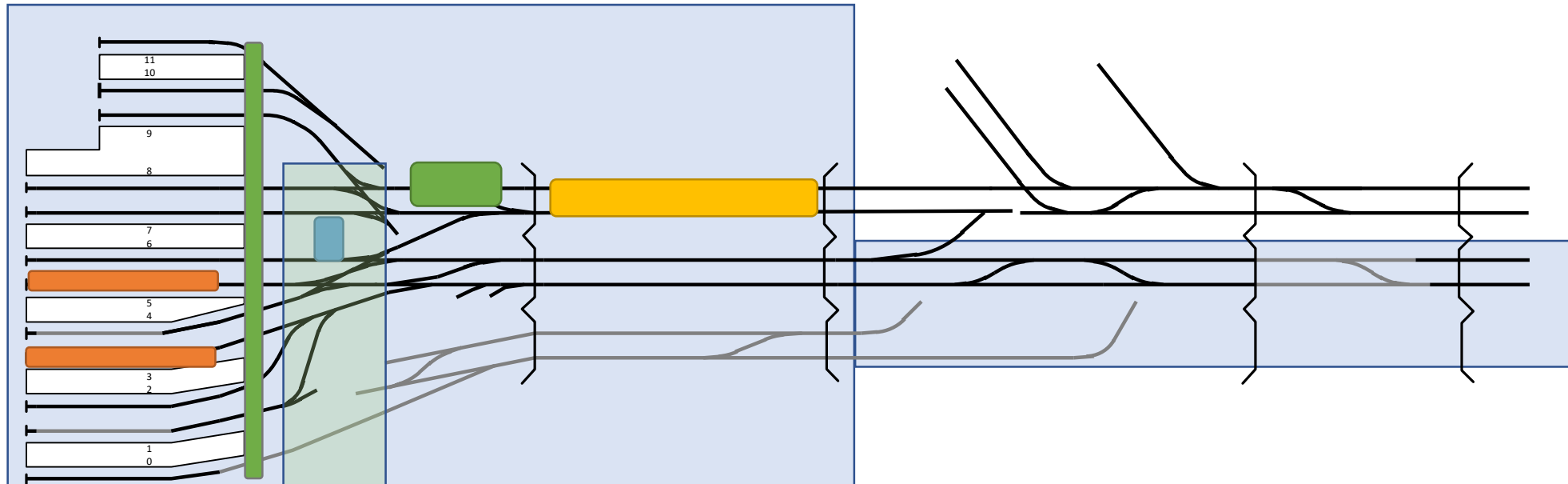
### E&P: Junction Lighting - Removal of Existing 30m Column at KX Throat

**Ancillary Civils:** CMS, Cable recoveries, Speed Board install works

## Siemens : Gantry 249 Cable install

## Considerations

- Train stacking and movements require entry and exit
- Exclusion zones for lifting in the throat area
- Large plant and exclusion zones for Platform Works and Gantry 249.
- Possession limit availability to block signals - Routes for trains and allowing passenger service routes.



# KXR recovery enabling access

## Weekend 29

### Week 29 17-18 Oct 20

#### 54h ALB

**Signal:** KX9 Implementation - Combined Stage 3 (Wood Green, Finsbury, Moorgate & Holloway Plus Fringes)

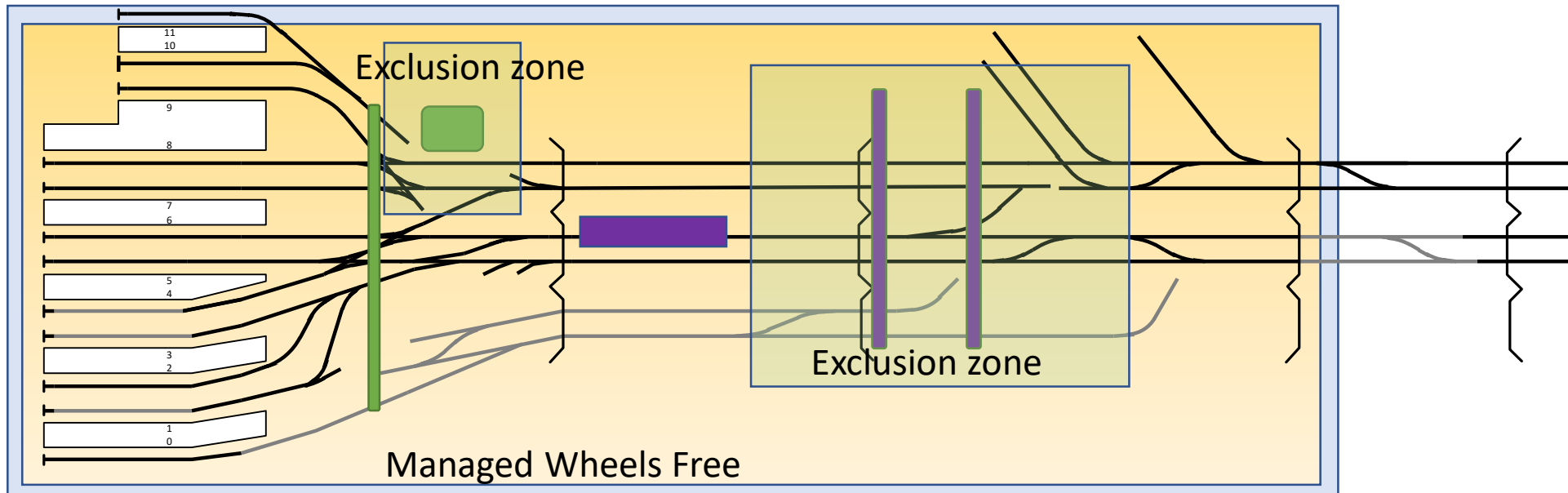
**Civils :** Chamber A and Gantry 249 works

**OLE:** OLE Portals E00/30A & E01/02E @ Belle Isle

**OLE:** Install SPS E01/02E and GWT Central bore  
GT/C/01A - GT/C/54A, WR5, 6, 14, 15, GTC1 & GTC2

### Considerations

- OLE Portal Bridge in Belle Isle requires big exclusion zone.
- Key enabling KX9 wheel free required.
- No 1 Slow Track to be removed for Chamber A to remove obstruction, critical for Camden sewer xmas delivery



# KXR recovery enabling access

## • Weekend 33

### **Week 33 14-15 Nov 20**

#### **54h Slow Line Block (Canals Open)**

**Track:** Renewal of 5070A Pts GWT West bore

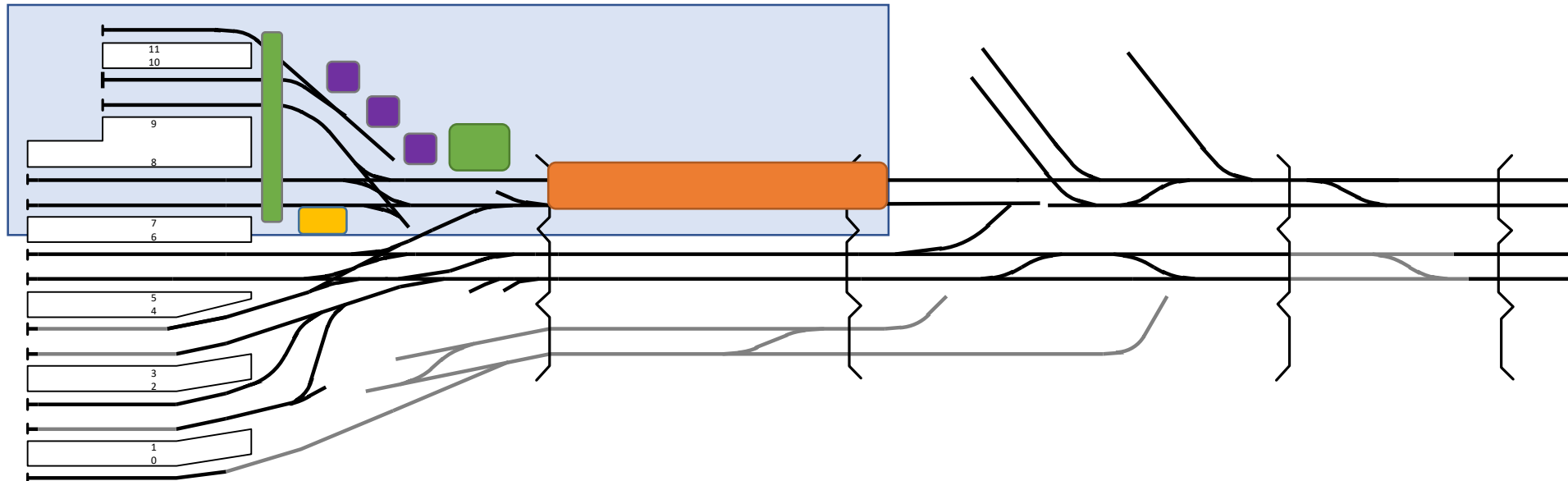
**Civils :** Chamber A and Gantry 249 works

**Ancillary Civils:** Junction Light bases and Trackside Connection bases & route

**OLE:** OLE Foundations E00/23A (Mast and Tie), E00/21B & E00/22G

### **Considerations**

- Smallest possession footprint possible
- Large plant movements
- Train stacking and moves
- Possession limit availability and isolation limits
- Western Retaining Wall interface with OLE foundations



# KXR recovery enabling access

## • Weekend 34

**Week 34 21-22 Nov 20**

**54Hour ALB inc. Canal Jct**

**Civils** : Camden Sewer Chamber A Gantry 249 works

**Track Drainage**: Belle Isle Slow Line 194m Collector Drain, 184m of Up Fast Collector Drain and 15m UTX

**Ancillary Civils**: Signal & Junction Lighting bases and Trackside Connection bases & route

**Signal**: S&T LOC moves KX Throat - KX23 Implementation- Locs 0/29/2, 0/31, 0/34

**OLE**: OLE Foundations E00/19C & E00/23B and Main Steel E00/21B & E00/23A and Install SPS

**OLE**: Wire Transfers - Install SIC & Transfer Wire to E00/30A, E00/30B and E01/01A

**OLE**: Structure Recoveries - E/00/28, E/00/33, E/00/31, E/00/32 & E/01/01

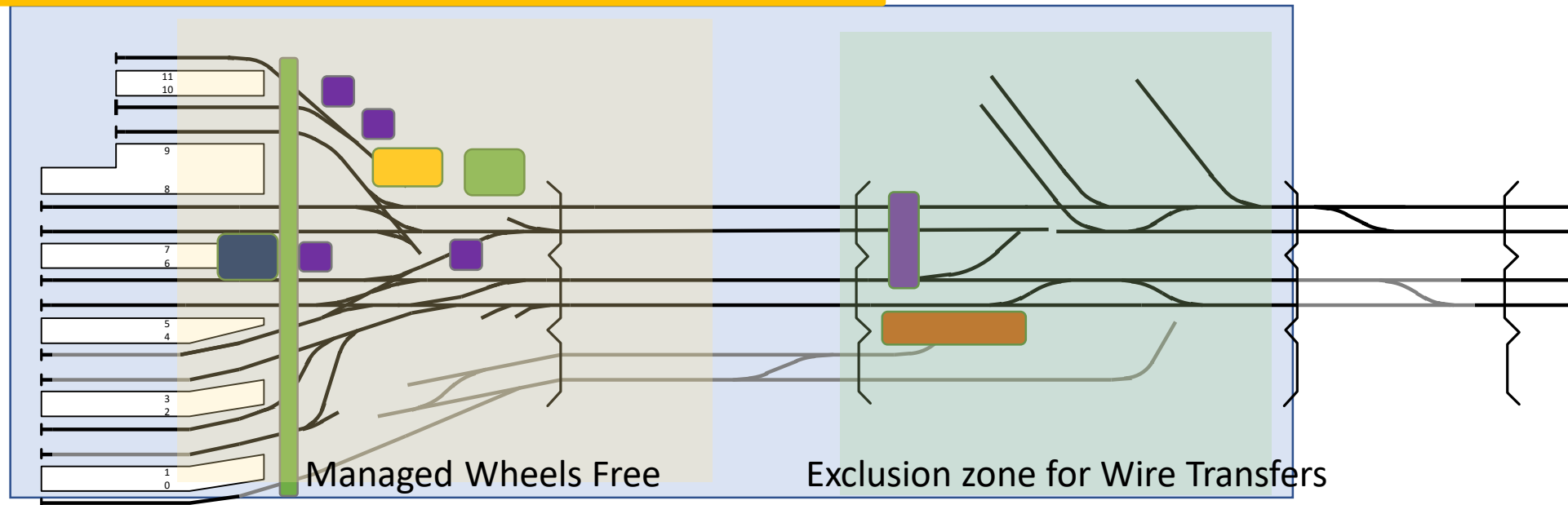
**Opportunity** : Kings Cross Junction Lighting - Lighting Column A

### Consideration

Close integration required in Belle Isle Between track drainage and Wire Transfers.

Large Wheels Free zone required for key signalling LOC movements.

LOC move is required to enable critical OLE Base



# KXR recovery enabling access

## • Weekend 35

### Week 35 28-29 Nov 20

#### **54h Slow Line Block**

**Track:** Up Slow Track Renewal GWT inc. 5070B Pts plus Drainage

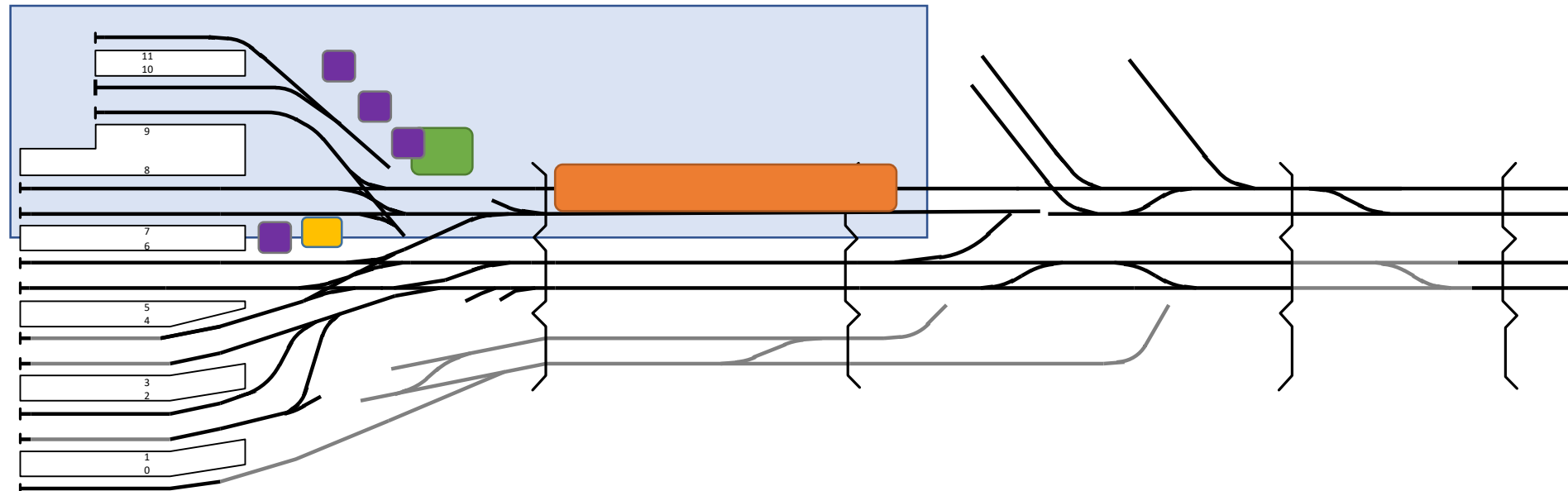
**Civils :** Camden Sewer Chamber A and Gantry 249 works

**Ancillary Civils:** Signal & Junction Lighting bases and Trackside Connection bases & route

**OLE:** Foundations E00/23D and E00/21B & E00/22G + E00/19C (contingency)

### Considerations

- Smallest possession footprint possible
- Large plant movements
- Train stacking and moves
- Possession limit availability and isolation limits





# KXR recovery enabling access

- Weekend 39 24<sup>th</sup> to 25<sup>th</sup> December

## Week 39-40 Xmas 2020

1 day Fast Line Block 24-Dec 0200 to 25-Dec 0200

Canal Jct closed until Sunday 27<sup>th</sup> Dec 0400

**Camden Sewer:** Install new Camden sewer between Chamber A and B across Fast & Slow Lines

Decommission existing Camden sewer

## PLATFORM 0

**Track :** Break out Slab

**Civils:** Demolition of existing Platform

**OLE:** E00/33B Install SPS, Relocate Section Insulators and Wire Transfer

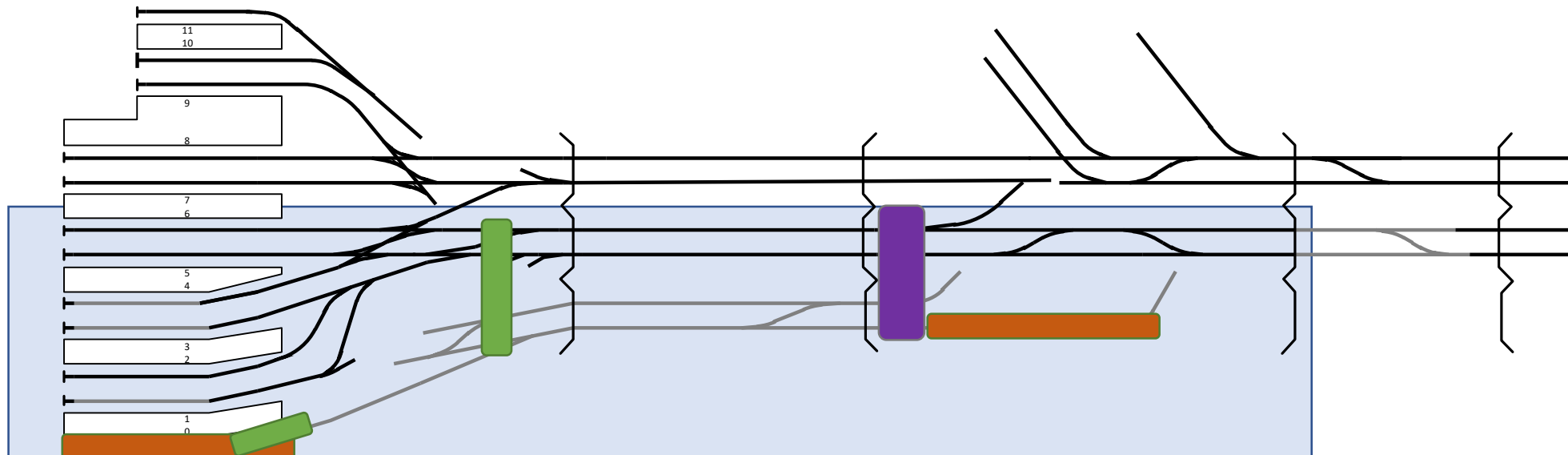
**OLE:** E00/34 Remove redundant SPS, Remove Portal boom and mast& tie

**OLE:** E01/09A Install OLE Isolator & associated Feeds 4A/1B, section Insulator, jumper out and Section Proving

**TRACK:** Belle Isle Line A install

## Considerations

- Thames Water planning timescales and prep works
- Camden Sewer all runs and chambers needs to be complete prior to xmas.
- Close working between Wire Transfer and Belle Isle Line A Install.



# KXR recovery enabling access

- Weekend 39 25<sup>th</sup> to 31<sup>st</sup> December

## Week 39-40 Xmas 2020

6 day ALB 25-Dec 02:00 to 31-Dec 04:00

**Camden Sewer:** Install new Camden sewer between Chamber A and B across Fast & Slow Lines

Decommission existing Camden sewer

### PLATFORM 0

**Track :** Break out Slab

**Civils:** Demolition of existing Platform

**OLE:** E00/33B Install SPS, Relocate Section Insulators and Wire Transfer

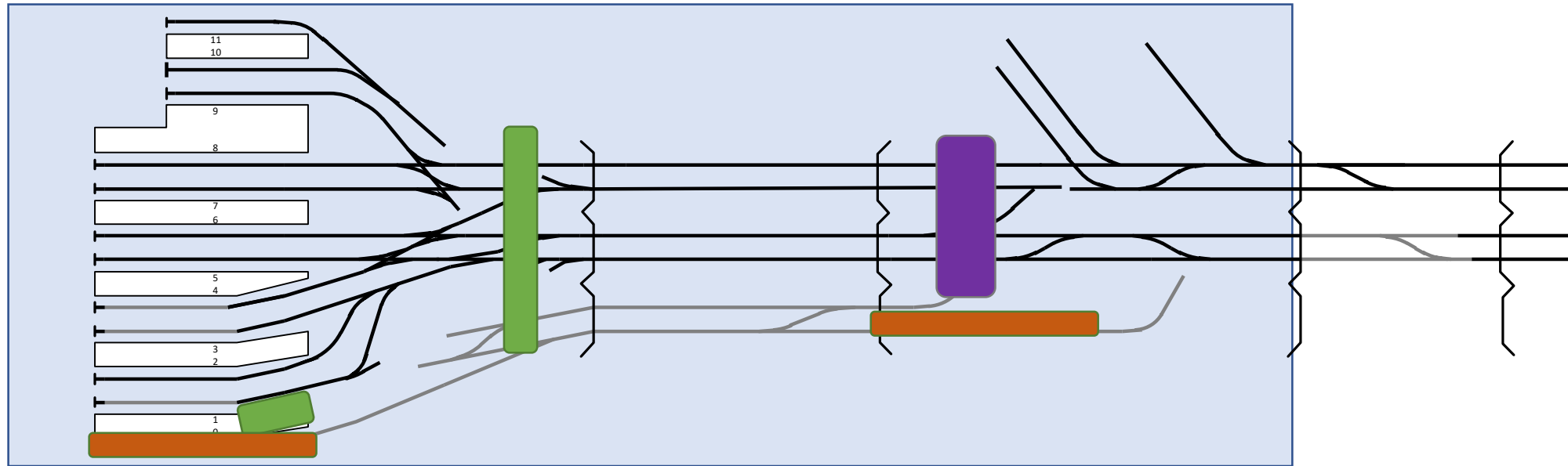
**OLE:** E00/34 Remove redundant SPS, Remove Portal boom and mast& tie

**OLE:** E01/09A Install OLE Isolator & associated Feeds 4A/1B, section Insulator, jumper out and Section Proving

**TRACK:** Belle Isle Line A install

## Considerations

- Thames Water planning timescales and prep works
- Platform Zero decommissioning requirements
- Enabling stage for Camden sewer readiness



# KXR recovery enabling access

- Weekend 39 31<sup>st</sup> December to 03<sup>rd</sup> January

## Week 39-40 Xmas 2020

4 day Slow Line Block 31-Dec 04:00 to 04-Jan 04:00

**Camden Sewer:** Install new Camden sewer between Chamber A and B across Fast & Slow Lines

Decommission existing Camden sewer

### PLATFORM 0

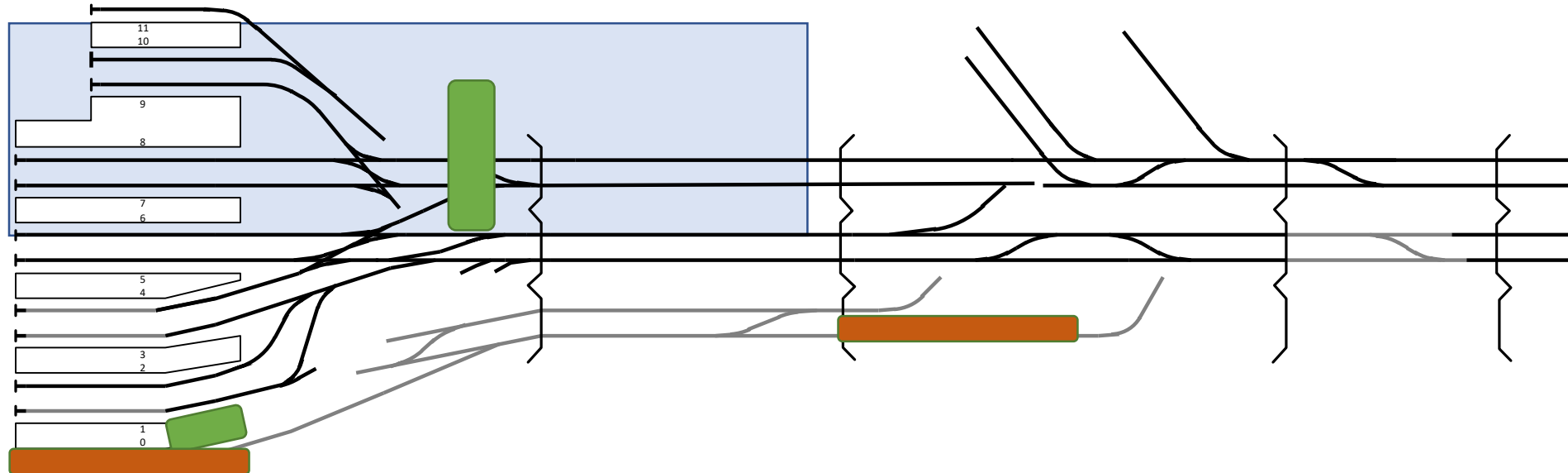
**Track:** Break out Slab

**Civils:** Demolition of existing Platform

**TRACK:** Belle Isle Line A install

## Considerations

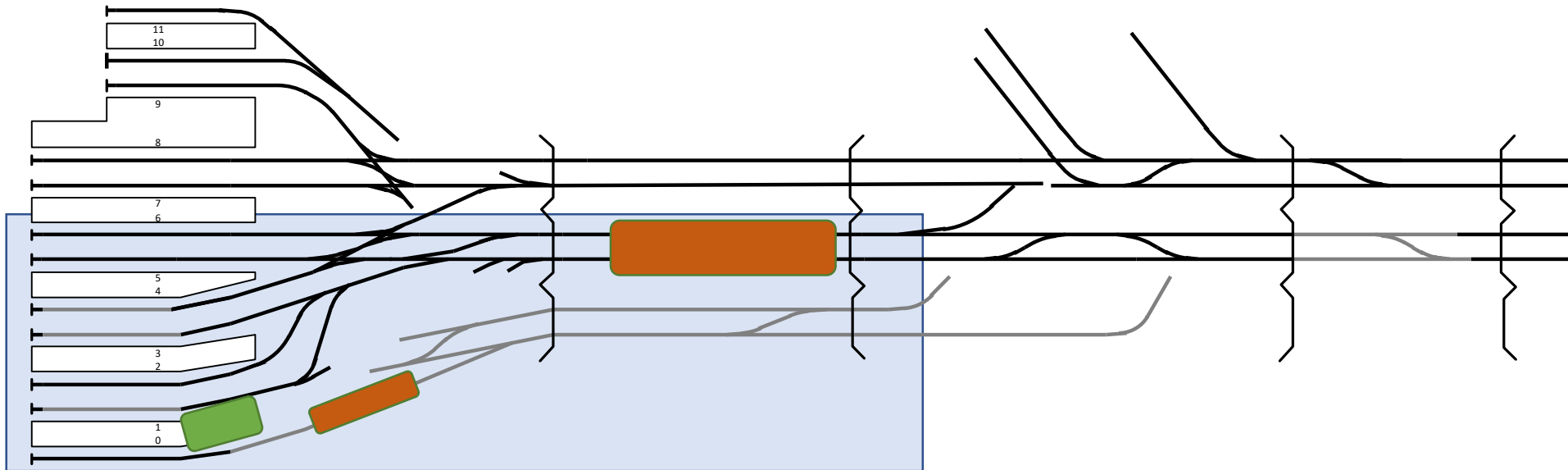
- Thames Water planning timescales and prep works
- Platform Zero decommissioning requirements



- Weekend 43

Deliver materials, Install Drainage,  
Install Line A/B and 5041 Pts

- Small possession footprint
- Train stacking and movements
- Critical path to enable Platform zero line A/B install



# KXR recovery enabling access

## • Weekend 44

### Week 44 30 Jan-01 Feb 21

#### **54h All Line Block\***

**OLE:** Structure E00/23D, Install E00/22G - Portal Bridges, E00/23 Install split span wires and remove redundant wire support assemblies, E00/23A Transfer wire from E00/23, Install Insulators and DEP, Remove E00/25 TTC Boom Slow Lines, SPS install GTW03, GTW04T. Remove SPS on E00/25 & E00/22B.

**Signal:** KX14 Implementation - Rehearsal - WG, FN/S, MG, HW Fringe

*Opportunity: Signal Testing and prep testing*

### Considerations

- Design not available until January for final OLE works
- Exclusion zone restrictions and Wheels free (Signalling been brought out of Stage1 Partial closure to allow removal of WE05 ALB restriction)
- Critical resource availability

